

## Smart exudate management

Giving you confidence to leave the dressing on for longer and still maintain an optimal wound healing environment.



**1. Rapid absorption with minimal swelling:**  
The foam layer allows rapid absorption of both normal and viscous exudate<sup>9,10</sup> and it is better at handling exudate than comparable dressings<sup>11</sup>.



**2. Maximises capacity by channelling exudate:**  
Exudate is channelled away from the wound and over a wider area to increase moisture vapour loss and reduce swelling<sup>4,7</sup>.

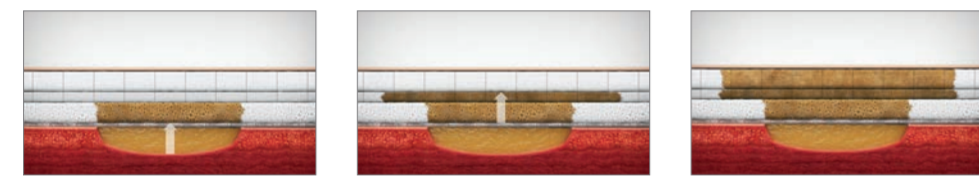


**3. Traps bacteria away from the wound:**  
The superabsorbent fibres in the retention layer prevent exudate containing bacteria from re-entering the wound bed, even under compression<sup>9</sup>. Backing film prevents entry of external bacteria<sup>12</sup>.

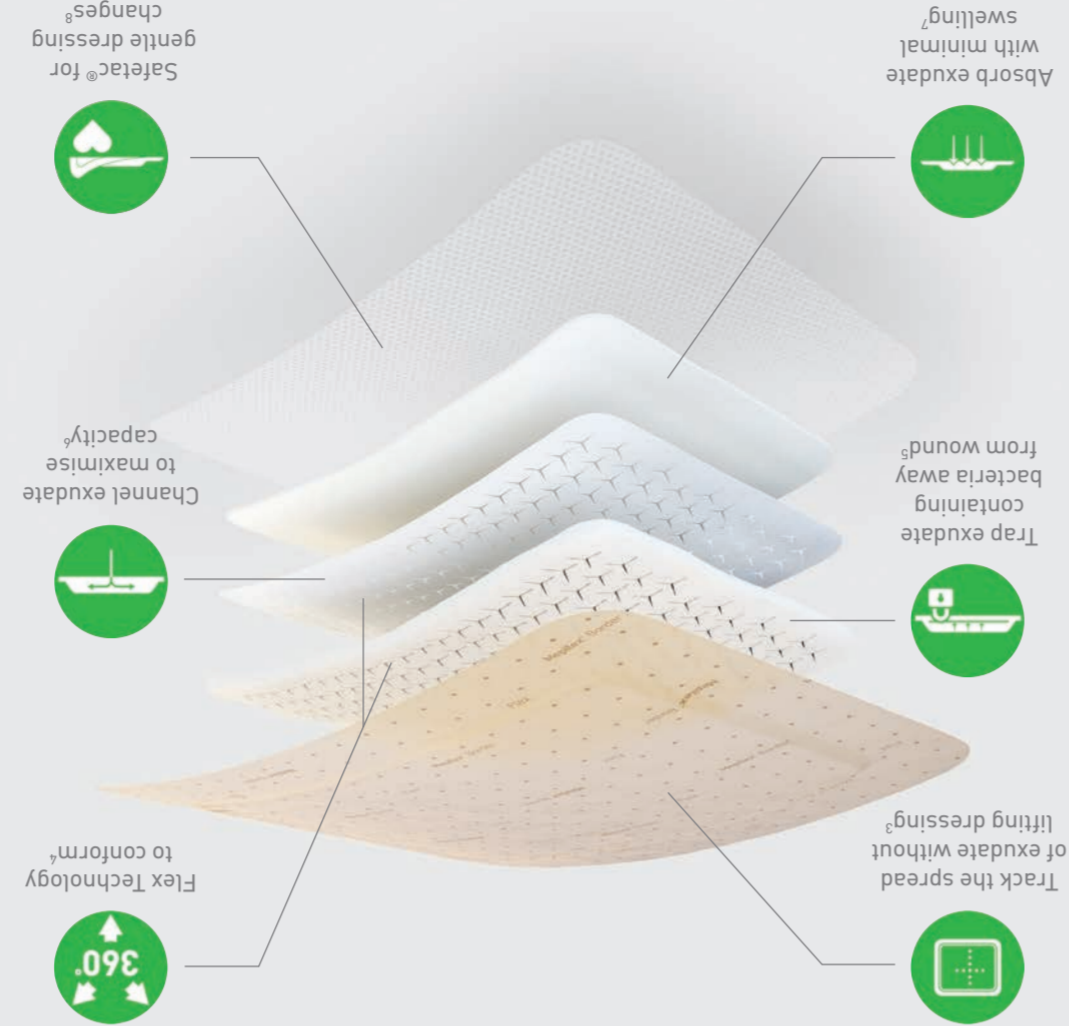


**4. Tracks exudate without dressing removal:**  
The Exudate Progress Monitor allows the spread of exudate to be objectively assessed and recorded, without disturbing the wound<sup>2</sup>.

Rapid absorption with minimal swelling and maximises capacity by channelling exudate<sup>6,7</sup>:



Rapid absorption + Channelling exudate with spreading layer = Greater fluid handling capacity + Minimal swelling



Our next generation of flexible dressings are designed to stay on and uniquely conform: giving time back to nurses, cost savings back to managers and quality of life back to patients<sup>12</sup>.

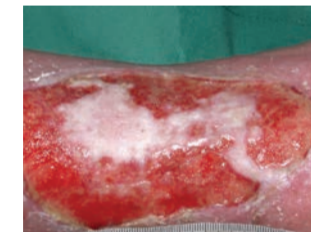
## Introducing Mepilex® Border Flex

## Mepilex® Border Flex is designed for a wide range of exuding wounds such as:

Diabetic foot ulcer



Venous leg ulcer



Pressure ulcer



Trauma



Skin tear



Mepilex® Border Flex may also be used as part of a prophylactic therapy to help **prevent skin damage**, e.g. pressure ulcers.

Square

Order number	Size (cm)	Size (inch)	Dressings per pack
595211-50	7.5 x 7.5	3 x 3	10
595311-00	10 x 10	4 x 4	10
595011-00	12.5 x 12.5	5 x 5	10
595411-00	15 x 15	6 x 6	10
595611-00	15 x 20	6 x 8	10

Note: Please contact your local Mölnlycke representative for information about order numbers available in your country.



Oval

Order number	Size (cm)	Size (inch)	Dressings per pack
583300	13 x 16	5.1 x 6.3	5
583400	15 x 19	6 x 7.5	5
583500	7.8 x 10	3.1 x 4	5



Visit [molnlycke.com](http://molnlycke.com) to find out how Mepilex® Border Flex dressings can help your patients, your team and your budgets.

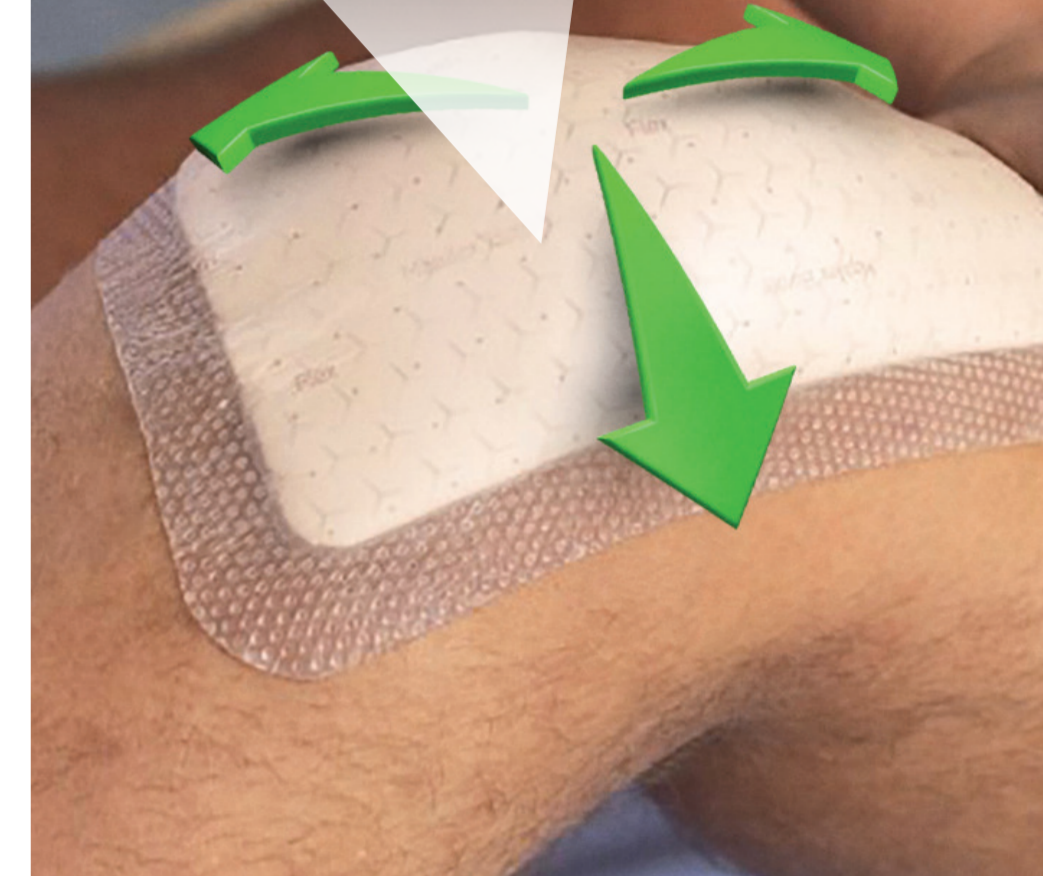
**References:** 1. Nelson, D. A New Bordered Foam Dressing Technology Improves Wound Outcomes and Satisfaction While Reducing Dressing Utilization in Acute Care. Poster Presentation at WOCN Annual Meeting, Nashville, 2019. 2. Tyson, L. Study First: Driving the Case for Improving Hospital Wound Care. Poster Presentation at WOCN Annual Meeting, Nashville, 2019. 3. Mölnlycke Health Care. Mepilex® Border Flex – Estimate of spreading area using dot pattern on backing film. Report no. PD-528872. Data on file. 4. Mölnlycke Health Care. Mepilex® Border Flex Product Manual – Conformability PD-528870. Data on file. 5. Mölnlycke Health Care. Mepilex® Border Flex-Bacteria encapsulation. Report no. PD-537072. Data on file. 6. Mölnlycke Health Care. Mepilex® Border Flex Product Manual – Spreading layer PD-528874. Data on file. 7. Mölnlycke Health Care. Product Manual – Maintained dressing profile. Report no. 525458. Data on file. 8. White, R. A multinational survey of the assessment of pain when removing dressings. Wounds UK 2008;4(1):14-22. 9. Mölnlycke Health Care. Mepilex® Border Flex – Absorption and dispersion tests on inclined plane, viscous test solution. Report no. PD-528871. Data on file. 10. Mölnlycke Health Care. Product manual Initial abs different test solutions. Report no. PD-535352. Data on file. 11. Mölnlycke Health Care. Mepilex® Border Flex – Fluid handling capacity compared to Urgotul® Foam Absorb Border, Aquacel® Foam, Allevyn® Classic Gentle Border, Allevyn® Life, Optifoam Gentle, KerFoam Gentle Border. Report no. PD-527642. Data on file. 12. Mölnlycke Health Care. Product Manual Mepilex® Border Flex – Viral penetration. Report no. PD-535090. Data on file. 13. Opinion Matters Professional Health Care Treatment for Wounds survey conducted June-July 2016 in UK. Data on file. 14. Woo, K. & Bergström, C. An Open Randomised Cross-over Investigation Assessing Perceived Pain at Dressing Change Comparing A Soft Silicone Dressing, Mepilex® Border, with a Adhesive hydrocolloidal polyurethane dressing, Allevyn® Adhesive in Patients with chronic ulcer (Clinical Investigation Report IMXB408, Part A, Mölnlycke Health Care, 2007). 15. Van De Looerbosch, D., Andersson, A., Husmark, A. & Körner, V. An open randomised explorative study comparing Mepilex® Border with Tulle in patients with pressure ulcers according to stage II, EPUAP guidelines (Clinical Investigation Report IMXB201, Mölnlycke Health Care, 2001). 16. Mölnlycke Health Care. Mepilex® Border Flex – Waterproofness. Report no. PD-532095. Data on file. Mölnlycke Health Care AB, P.O. Box 13080, Gamlestadsvägen 3 C, SE-402 52 Göteborg, Sweden. Phone + 46 31 722 30 00 The Mölnlycke, Mepilex and Safetac trademarks, names and logos are registered globally to one or more of the Mölnlycke Health Care Group of Companies. ©2019 Mölnlycke Health Care AB. All rights reserved.H01M001334



Wounds need to heal. Patients need care. Nurses need time. Budgets are tight. The challenge is finding a dressing that is comfortable and stays on as long as it is needed. Without compromise.

## Unique Flex Technology = 360° flexibility

Y-cuts expand to allow movement:



## Mepilex® Border Flex

# User guide



Stays on. Uniquely conforms



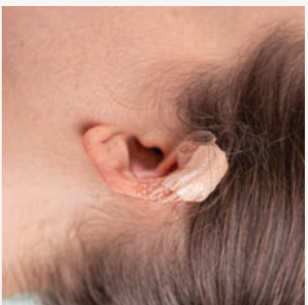
9/10 patients feel their wound impacts their quality of life<sup>13</sup>.

Our proven Safetac® soft silicone wound contact layer **reduces pain and damage to the skin and risk of maceration** compared with traditional (adhesive) dressings<sup>14,15</sup>.

Mepilex® Border Flex is also **water resistant so your patients can shower**<sup>16</sup>. Ensure longer wear time by securing the borders prior to shower.



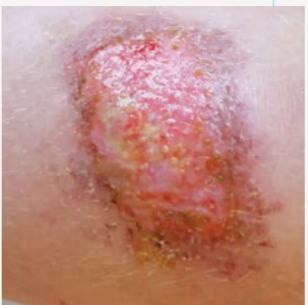
**5.5 days**  
average wear time on multiple wound types<sup>1</sup>



**Pressure ulcer prevention**



**Trauma**



**Skin tears**



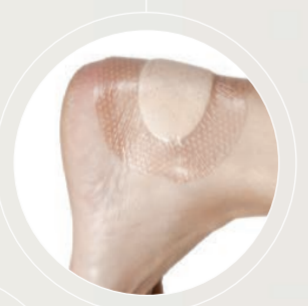
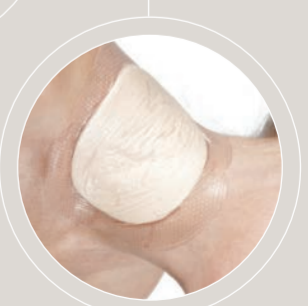
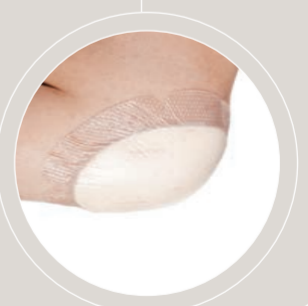
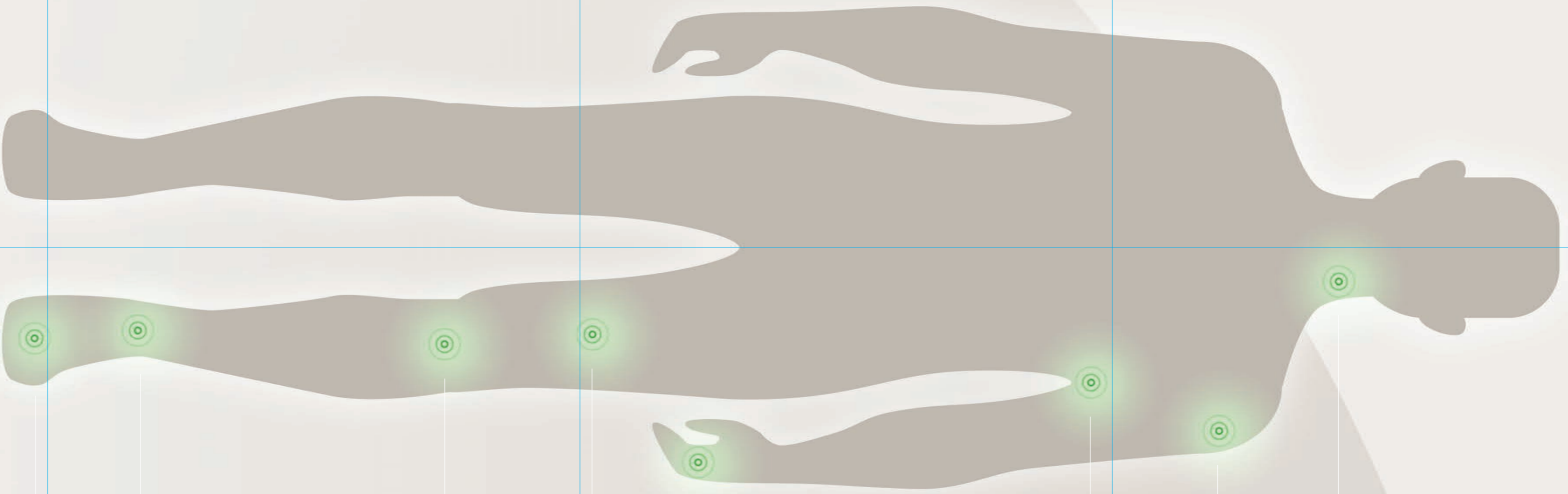
**Leg ulcer**



**Pressure ulcer treatment**



**Diabetic foot ulcer**



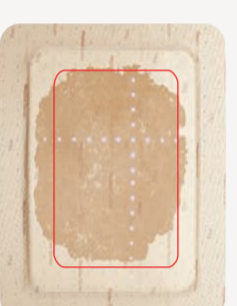
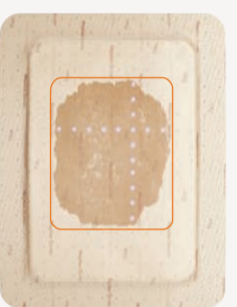
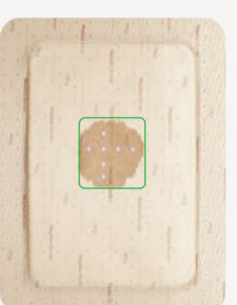
**How to apply Mepilex<sup>®</sup> Border Flex**

1. Remove the middle release liner.
2. Apply to wound.
3. Remove second release liner.
4. Remove third release liner.
5. Smooth down the borders.



**How the Exudate Progress Monitor works**

The Exudate Progress Monitor gives you the confidence to leave the dressing in place for longer\*.



The Exudate Progress Monitor is a grid of equidistant dots.

**e.g. 4x4cm**

As exudate spreads you can record a dot count that reflects exudate volume in the dressing.

**e.g. 8x10cm**

You can then refer to the recorded dot count to help monitor exudate trends.

**e.g. 10x14cm**

Consider dressing change when exudate is approaching the borders of the dressing\*.

\*Wound inspection and dressing change frequencies are driven by clinical decision and should be at the discretion of the treating clinician

Visit [molinlycke.com](http://molinlycke.com) to find out how Mepilex<sup>®</sup> Border Flex dressings can help your patients, your team and your budgets.